

Expert Level Thermal Imaging Cameras

Features & Specifications

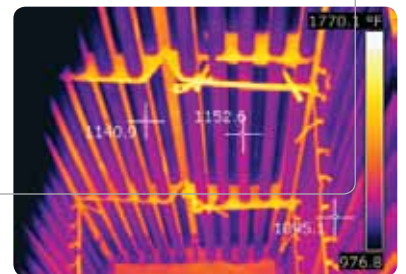
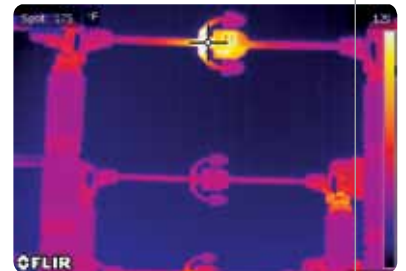
Powerful Infrared Image

Integrated Digital Camera

Real-Time Recording

Ergonomic Viewfinder + LCD Display

Accurate Measurement & Analysis Tools



P-Series Features

For expert level thermographers, P-Series infrared cameras offer the highest resolution, best image quality, and widest array of options.

Highest Quality IR Images – Over 300,000 pixel resolution at 640 x 480 for more temperature measurements, greater precision and accuracy from farther away

High Thermal Sensitivity – Most sensitive, uncooled thermal imaging cameras in the world for the finest image details and temperature difference measurements

3.2 MP Digital Camera with Video Lamp – High-quality visual camera captures crisp visible light stills and video in all conditions to pair with thermal images

Adjustable Viewfinder & LCD – High resolution color viewfinder tilts for ergonomic viewing and use in bright sunlight conditions while large 5.6" LCD makes it easier to share images with co-workers

Built-in GPS – Automatically links geographic location of thermal images to Google Earth™ application to tag and track potentially problematic equipment and patterns

Laser Pointer – Aligns the thermal image with the physical target for precise documentation

Scalable P-i-P and Thermal Fusion – Superimpose thermal images over visible light pictures or blend the two with Fusion for crystal clear results

Panorama Support – Take a sequence of images and automatically combine them into a single large image with FLIR Reporter

Sequential Radiometric Files – Real-time .seq recording of images and measurements capture data from moving mechanical devices, fluctuating electrical loads, and more for comprehensive post-analysis and reports

MPEG-4 Video – Record high-resolution visible-light and infrared images as digital video



Highest Quality IR Images



Adjustable Viewfinder



Panorama Support

P620

Includes:

- 307,200 pixel thermal imagery
- 40 mK sensitivity at +/- 2% accuracy
- 2x digital zoom
- Standard 24° lens
- 3.2 megapixel visible light camera
- Standard measurement functions
- Thermal Fusion & Picture-in-Picture
- Text & voice annotation
- Periodic storage

P640

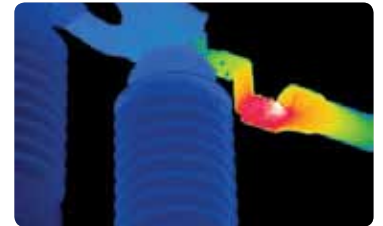
Additional Features:

- 30 mK sensitivity at +/- 2% accuracy
- 8x digital zoom
- Choice of base optics 24°, 45°, or 12°
- Extended measurement functions
- USB & Firewire connections
- Real-time sequence recording in-camera
- Upgradeable to FLIR P660
- User profiles

P660

Additional Benefits:

- 30 mK sensitivity at +/- 1% accuracy
- Built-in GPS
- Panorama function
- Advanced laser pointer
- MPEG-4 on-board video recording



GF306 SF6 Gas Detection

Includes:

- 76,800 pixel thermal imagery
- 25 mK sensitivity at +/- 1% accuracy
- Temperature measurement capability from -40° to 500°C
- Standard 14.5° lens; 24° optional
- 8x digital zoom
- 3.2 megapixel visible light camera
- DeltaT and multiple spot measurements
- Built-in GPS
- Onboard video storage

GF309 Through-Flame Imaging

Includes:

- 76,800 pixel thermal imagery
- 25 mK sensitivity at +/- 1% accuracy
- Temperature measurement capability from -40° to 1,500°C
- Standard 24° lens; 14.5°, & 6° optional
- 8x digital zoom
- 3.2 megapixel visible light camera
- DeltaT and multiple spot measurements
- Built-in GPS
- Detachable nickel coated heat shield



GF306 & GF309 Features

For experts who need the power to see invisible gases escaping into the environment, or through flames for industrial furnace and boiler inspections.

High-Quality IR Images – GF-Series cameras use high performance cooled detectors to deliver outstanding sensitivity and image quality

SF6 Detection – GF306 finds sulfur hexafluoride (SF6) and many other fluorinated gas leaks quickly, accurately, and safely

Through-Flame Imaging – GF309 sees through flames with a special midwave “flame filter” for high temperature furnace and fire box inspections, checking burner alignment, and identifying slag buildup

3.2 Megapixel Digital Camera with Video Lamps – Digital camera captures clear visible light pictures and video in all conditions to pair with thermal images

Adjustable LCD and Viewfinder – High resolution 800 x 480 tiltable finder and large 4.3” LCD that swivels and tilts for safe, ergonomic viewing from any angle

Built-in GPS – Automatically links geographic location of thermal images to Google Earth™ application to tag and track potential problems and patterns

Laser Spot – Aligns hot or cold spot in IR image with actual physical target

Extended Measurement – 10 spotmeters, 5 area boxes, 1 horizontal or vertical live line profile and DeltaT provide detailed analysis

MPEG-4 Video – Record high resolution visual light and infrared images as full motion video



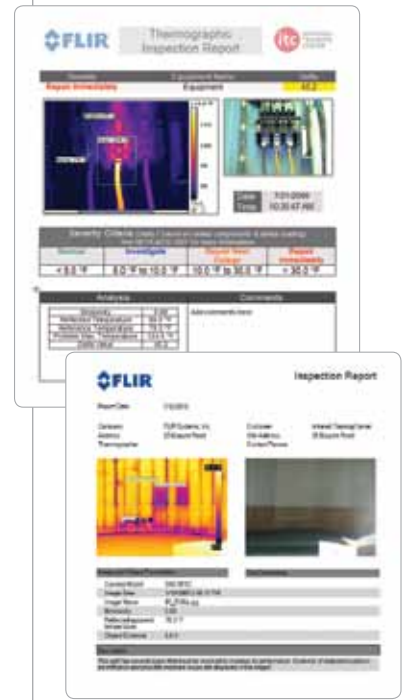
Advanced Reporting Software for Experts

All FLIR cameras come with the powerful QuickReport analysis and reporting software for importing infrared and visible-light images into an easy-to-read document. Measure, adjust, add notes, and e-mail your reports in PDF format.

Reporter PRO gives you everything you need to complete reports quickly and with total flexibility. Design templates in MS Word®, drag & drop images, and generate multi-page reports. Import measurements, DeltaT analysis, or your own formulas. Automatically add GPS coordinates to images. Even load images and data into Excel and PowerPoint!

GF-Series cameras come standard with VideoReport, FLIR's video editing and annotation software.

Contact us for more details about these and our other powerful software tools or visit www.flir.com to download trial versions.



Infrared Training Center

Get the most out of your FLIR investment and advance your career with world-class instruction through the Infrared Training Center. An ITC certificate is written proof of your expertise in operating your camera and interpreting the thermal information it provides.

For more information, visit www.infraredtraining.com.



ThermaTrak

Protect your investment with this exclusive, innovative technology from FLIR. ThermaTrak features recovery software to determine the exact geographic position of a lost, missing, or stolen infrared camera so you can let law enforcement know where to track it down. Ask us for details.



Imaging Specifications

	P620	P640	P660	GF306	GF309
Imaging Specifications					
Resolution	640 x 480	640 x 480	640 x 480	320 x 240	320 x 240
Total Pixels	307,200	307,200	307,200	76,800	76,800
Thermal Sensitivity	<0.04°C	<0.03°C	<0.03°C	<0.025°C	<0.025°C
Accuracy	+/-2% or 2°C	+/-2% or 2°C	+/-1%	+/-1%	+/-1%
Temperature Range	-40°F to 932°F (-40°C to 500°C)	-40°F to 932°F (-40°C to 500°C)	-40°F to 932°F (-40°C to 500°C)	-40°F to 932°F (-40°C to 500°C)	-40°F to 2,732°F (-40°C to 1,500°C)
High Temp Option	x	x	x		x
Lens Options	Standard: 24° x 18°; Optional: 45°, 12°, 7°; Close-up: 50 µ, 25 µ			Standard: 14.5° Optional: 24°	Standard: 24°; Optional: 14.5°, 6°
Zoom	1-2x Continuous Digital	1-8x Continuous Digital	1-8x Continuous Digital	1-8x Continuous Digital	1-8x Continuous Digital
Focus	Auto & Manual	Auto & Manual	Auto & Manual	Auto & Manual	Auto & Manual
Detector	Uncooled Microbolometer	Uncooled Microbolometer	Uncooled Microbolometer	Cooled QWIP	Cooled InSb
Color LCD	5.6"; 1,024 x 600 Pixels	5.6"; 1,024 x 600 Pixels	5.6"; 1,024 x 600 Pixels	4.3"; 800 x 480 Pixels	4.3"; 800 x 480 Pixels
Adjustable Viewfinder	800 x 600 Pixels	800 x 600 Pixels	800 x 600 Pixels	800 x 480 Pixels	800 x 480 Pixels
Video Camera w/ Lamp	3.2 MP	3.2 MP	3.2 MP	3.2 MP	3.2 MP
Fusion	PIP Scalable & Moveable	PIP Scalable & Moveable	PIP Scalable & Moveable		
Laser Spot	x	x	x	x	x
Video Out	Composite	Composite	Composite	HDMI	HDMI
Analysis					
Professional‡	x	x	x	x	x
Delta T	x	x	x	x	x
Annotation					
Voice (60 seconds)	x	x	x		
Text	x	x	x		
GPS			x	x	x
File Storage					
Radiometric JPG	x	x	x	x	x
MPEG Video Recording		x	x	x	x
Other					
ThermaTrak	x	x	x	x	x

‡ Professional analytics tools include DeltaT functionality and multiple movable spots



BOSTON

FLIR Systems, Inc.
25 Esquire Road
North Billerica, MA 01862
USA
PH: +1 866.477.3687
PH: +1 978.901.8000

PORTLAND

Corporate Headquarters
FLIR Systems, Inc.
27700 SW Parkway Ave.
Wilsonville, OR 97070
USA
PH: +1 866.477.3687

SANTA BARBARA

FLIR Systems, Inc.
70 Castilian Dr.
Goleta, CA 93117
USA
PH: +1 866.477.3687

CANADA

FLIR Systems, Ltd.
5230-125 South Service Rd.
Burlington, ON L7L 5K2
Canada
PH: +1 800.613.0507